

SocialConsult Co. Ltd.

Office 1: No 3B, Quoc Tu Giam Street, Dong Da District, Ha Noi City

Office 2: 33A, Pham Ngu Lao Street, Hoan Kiem District, Ha Noi City

Tel : 84-4-39448283 Fax: 84-4-39448284

Email: sc@socialconsult.com.vn

Website: www.socialconsult.com.vn

Ha noi 20 September, 2011

Dear Sir/Madam,


SocialConsult is a company specializing in social and environmental impact analysis. We have been providing services on environmental impact assessments, initial environmental examinations, environmental management plans preparation; environmental impact assessment and environmental management plan preparations and updating. For the resettlement issues, we have successfully completed services for resettlement framework and resettlement action plan preparations and updating, independent external resettlement monitoring and others.

Among the related services to social and environmental issues, **Socialconsult** has always received high evaluations from partners of its capability and quality of its services.

We believed that, if we have chances working with you, we shall provide the service with highest quality with utmost attention to detail and accuracy.

Thank you very much for your considerations.

Sincerely yours,



Ngo Thanh Tu

Director



COMPANY PROFILE



Hanoi, September, 2011

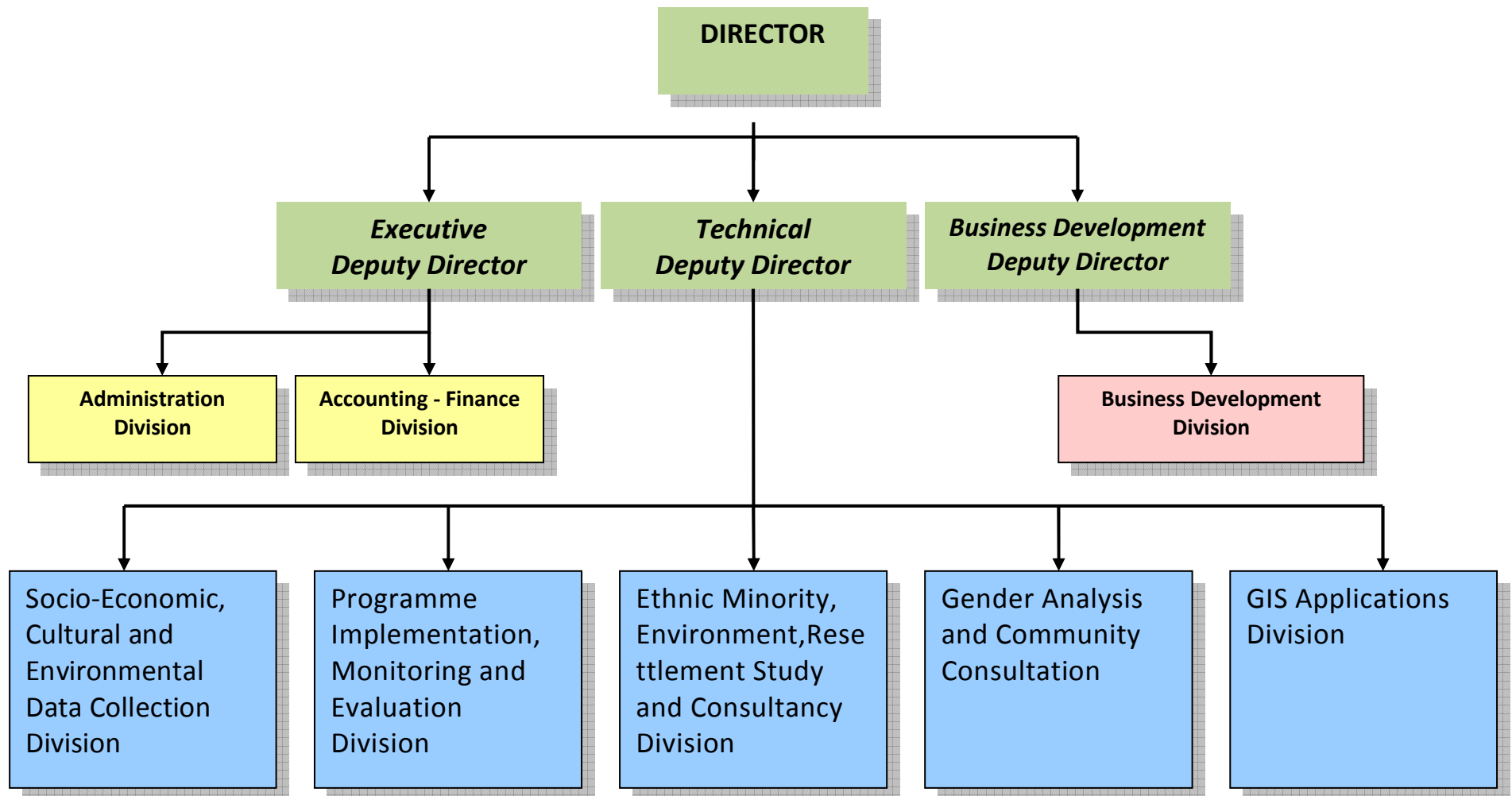
I. INTRODUCTION

SocialConsult is a dynamic company, specializing in social and environmental impact analysis. The company currently has 36 permanent employees including five international experts in different fields of expertise. Among the staff are members with professional background and experience in fields such as sociology, ethnography, anthropology, education, planning, economics, finance, project management, gender studies, community development and environmental science. The combination of in-depth institutional, cultural, social, economic and environmental local knowledge, coupled with extensive experience of international programmes and project implementation, allows **SocialConsult** to consistently deliver high quality consulting services.

SocialConsult has five professional divisions:

- Socio-Economic, Cultural and Environmental Data Collection Division
- Programme Implementation Monitoring and Evaluation Division
- Ethnic Minority, Environment and Resettlement Study and Consultancy Division
- Gender Analysis and Community Consultation Division
- GIS Applications Division

This dividing into functions is merely for the purposes of centralizing expertise. In practice, the five divisions assist each other to effectively implement projects. For example, the Programme Implementation Monitoring and Evaluation Division is supported with data from the Socio-Economic, Cultural and Environmental Data Collection Division. Likewise, the Ethnic Minority, Environment and Resettlement Division works in close contact with the Gender Analysis and Community Consultation Division because the process of resettlement planning or environmental management planning requires the participation of gender specialists and community specialists. The **SocialConsult** Divisions are linked, as shown in the following diagram:



SocialConsult has two offices at:

Office 1: No 3B, Quoc Tu Giam Street, Dong Da District, Ha Noi City

Office 2: 33A, Pham Ngu Lao Street, Hoan Kiem District, Ha Noi City

Tel : 84-4-39448283 Fax: 84-4-39448284

Email: sc@socialconsult.com.vn

Website: www.socialconsult.com.vn

II. TECHNICAL CAPABILITY

The strength of **Socialconsult** lies in its staff member who have experience and comprehensive understanding of the safeguard policies of the international donors and development agencies, in particular, the safeguard policies of the World Bank and the Asian Development Bank. In addition, our experts also have mastery of compensation, assistance and resettlement policy; and of both local authority and Vietnamese government policy relating to the environment and the development of ethnic minorities. These policies are taken into full consideration by **SocialConsult** experts in the implementation and supervision of resettlement schemes, and when addressing environmental and ethnic minority issues.

In the environmental field, **SocialConsult** has participated in drafting many guidelines manuals, environmental management plans (EMPs), environmental impact assessments (EIAs), and initial environmental assessments (IEEs) for projects and programs funded by financial institutions and international development organizations in Vietnam and the region.

SocialConsult has acquired extensive equipment and tools for the collection and monitoring of environmental indicators such as air quality monitoring meters; water index measuring; water and oil parameter assessment; water quality testing; dust and noise analysis and monitoring. With this modern environmental monitoring and measuring equipment, **SocialConsult** always meets measurement and analysis requirements. Currently, reports on environmental impact assessment (EIA), initial environmental assessments (IEE), environmental management plan (EMP) and the management of solid waste, air and water pollution provide one of the major strengths **SocialConsult**.

In relation to resettlement issues, **SocialConsult** experts are able to provide many services such as inventories of losses (IOL), community consultations, socio-economic surveys of affected households and communities (SES), replacement cost surveys (RCS), resettlement frameworks, resettlement plans, Due Diligence Reports, updating resettlement plans and monitoring the implementation of resettlement plans, etc. **SocialConsult** always ensures such services are of the highest quality and that they are carried out with utmost attention to detail and accuracy.

Many environmental impact assessment reports (EIA) and resettlement action plans (RAP) have been prepared by **SocialConsult**. Examples are:

- EIA of key economic areas of the south (Ausaid).
- EIA of water and environmental hygiene sanitation subprojects of the Central Provinces (ADB).
- EIA of the railway Hanoi-Nhon (ADB-AFD).
- EIA of Phap Van-Cau Gie expressway (JICA).
- EMPs for small hydro projects: A Roang, Nam Nghe, Nam Cha 3, Chaval (ADB).
- Resettlement Framework and resettlement plans for model subprojects of Sustainable Development of Northern Mountainous Provinces Project (ADB).
- RAP for the subproject in Vinh Phuc, Ninh Binh of the Rural Transport 2 project (WB)
- RAP for Bao Ha- Lang Thip route in Yen Bai province (JICA)
- RAP for Bac Hung Hai Irrigation Project (ADB)

SocialConsult has also provided many independent EIA and RAP monitoring services such as: the independent monitoring of the implementation of environmental management plan for Song Bung 4 Hydropower Project (ADB); the independent monitoring of the implementation of RAP for Phan Ri-Phan Thiet Irrigation Project (JICA); the independent monitoring of the implementation of environmental management plan and RAP for North Grid Expansion Project (2225-ADB); the independent monitoring of the implementation of RAP for the project on upgrading Vietnam's road system (WB), etc.

In addition, **SocialConsult** has also built the guidelines for implementation and provided training on particular safeguard policies. Examples of these are the guidelines for EIA reports, RAP and ethnic minority plans and training for 25 Planning and Investment Departments – the Comprehensive Capacity Building Program to improve ODA management in Vietnam Project (WB); instructive manuals for socio-economic surveys, EIA reports, RAP and ethnic minorities plans, including improving the efficiency of safeguard policy application in Vietnam (ADB), etc .

Among the related services to EIA reports and RAPs, as well as the independent monitoring of the environmental management and resettlement plans, **Socialconsult** has always received high evaluations from partners of its capability and quality of its services.

III. THE CONSULTING SERVICES PERFORMED ON SOCIO-ECONOMIC SURVEYS AND SAFEGUARD POLICIES

Some consulting services related to socio-economic surveys and safeguard policies

	Project	Donor	Consultant Tasks	Partner
SOCIAL-ECONOMIC SURVEYS				
1	Poverty survey of Red River Delta provinces	UNDP	<ul style="list-style-type: none"> - Design survey tool for qualitative and quantitative survey - Conduct survey on the status of poverty in 10 provinces and cities of the Red River Delta - Prepare report on the realities of poverty of the Red River Delta provinces 	UNDP
2	Living Standards and social stratification Survey in Hanoi, Da Nang and Ho Chi Minh City	SIDA (Sweden)	<ul style="list-style-type: none"> - Conduct survey on living standards and social stratification status - Prepare Report on Living standards and social stratification status, presented at the Conference of Donors on Living Status of major cities in Vietnam. 	SIDA (Sweden)
3	Survey of socio-economic areas of villages in the North Province	Ministry of Culture, Sports and Tourism	<ul style="list-style-type: none"> - Design the survey tools according to the survey contents - Conduct socio-economic surveys of professions in villages in seven provinces in the North. - Prepare report on socio-economic situation of professions in villages in northern area. 	Institute of Culture and Information - Ministry of Culture, Sport and Tourism

	Project	Donor	Consultant Tasks	Partner
SERVICES FOR SAFEGUARD POLICIES				
4	Song Bung 4 Hydropower Project	ADB	- Monitoring the implementation of Environment Management Plan (EMP) before, during and after construction phase of the Song Bung Hydropower Project 4 (Quang Nam province)	Project Management Unit of Song Bung 4 Hydropower (EVN)
5	Renewable energy and grid expansion in the remote mountainous areas of Vietnam	ADB	- Prepare environment management plan (EMP) for small hydropower sub-projects of Nam Nghe (Lai Chau), Nam Cha 3 (Dien Bien), A Roang (Thua Thien Hue) and Chaval (Quang Nam) - Conduct replacement cost survey - Prepare resettlement plan (RP) for small hydropower sub-projects of Nam Nghe (Lai Chau), Nam Cha 3 (Dien Bien), A Roang (Thua Thien Hue).	Northern Power Cooperation and Centre Power Cooperation
6	Sustainable Infrastructure Development for northern mountainous provinces	ADB	- Preparation of Resettlement Framework and Ethnic Minority Development Framework for Project. - Conduct replacement cost survey - Prepare Resettlement Plans, Ethnic Minority Development Plans for Core-subprojects, including sub-project of Linh Nham - Trang Xa road (Dai Tu, Thai Nguyen), and small	Culpin International Company (UK)

	Project	Donor	Consultant Tasks	Partner
			hydropower sub-system (San Vien and Tu Quang commune, Luc Binh district, Lang Son province).	
7	Clean water supplying and sanitation project in Cuu Long River Delta region (SRWSSP)	ADB	- Prepare the environmental impact assessment (EIA) for sub-projects in three provinces of Long An, Ben Tre and Tra Vinh	Project Management Board of Water Supply and Sanitation (Ministry of Construction)
8	Project Guarantee Commercial banks under the loan for supporting investment program of EVN (Loan 32273-02)	ADB	- Prepare the environmental impact assessment (EIA) for sub-projects in Hai Duong province and Hanoi	Power Company 1 (PC1)
9	Project Guarantee Commercial banks under the loan for supporting investment program of EVN (Loan 32273-02)	ADB	- Conduct replacement cost survey - Prepare resettlement plan (RP) and Ethnic Minority Development Plan (EMDP) for sub-projects in Tra Vinh and Soc Trang	Power Company 2 (PC2)
10	Clean Water and Sanitation Project for Central provinces (TA VIE 7126)	ADB	- Prepare Ethnic Minority Development Framework (EMDF) - Prepare Ethnic Minority Development Plan (EMDP) Core Subproject in A Tieng (Tay Giang district, Quang Nam Province)	AECOM Company (New Zealand)
11	Schools Solidification program (2008-2010 phase, the	ADB	- Draft Guidance on Compensation, assistance and resettlement: Guidelines for the Management Board of the	Project Management Board of the Central Government (Ministry of

	Project	Donor	Consultant Tasks	Partner
	Resettlement and Compensation Component)		provincial project implementation.	Education and Training)
12	The comprehensive capacity building programs in management of ODA in Vietnam South (Building materials and training Component)	WB	<ul style="list-style-type: none"> - Develop training modules on Safeguard Policies to ensure environmental and social. - Training for the Department of Planning and Investment of the 25 provinces selected in Phase 1 of the Making and monitoring the plan of compensation, resettlement and Environmental Management Plan 	Board of Management Capacity Building Programme for ODA Management Comprehensive (CCBP-Ministry of Planning and Investment)
13	Rural Road Improvements No.3 Project	WB	<ul style="list-style-type: none"> - Conduct replacement cost survey - Prepare Resettlement Plan (RP) for sub-projects in three pilot provinces Vinh Phuc, Ha Tay and Ninh Binh 	Project Management Unit 18 (Ministry of Transport)
14	Phap Van - Cau Gie Expressway	JICA	<ul style="list-style-type: none"> - Prepare Environmental Impact Assessment (EIA) Report (Vietnamese version) for obtaining the acceptance which will be issued by the Ministry of Natural Resources and Environment (MONRE). - Prepare Environmental Impact Assessment (EIA) - Conduct replacement cost survey - Prepare resettlement Action Plan (RAP) 	Katahira & Engineers International

	Project	Donor	Consultant Tasks	Partner
15	Irrigation projects Phan Ri-Phan Thiet (Binh Thuan)	JICA	- Independent monitoring of resettlement implementation Irrigation Project Phan Ri-Phan Thiet (Binh Thuan)	BCEOM (France)
16	Irrigation projects Phan Ri-Phan Thiet (Binh Thuan)	JICA	- Surveillance of infectious diseases in the project area (Infectious Diseases Surveillance) - Monitoring of environment quality during construction phase.	BCEOM (France)
17	Improvement Project route Bao Ha - Lang Thim (Yen Bai)	JICA	- Conduct replacement cost survey - Prepare Resettlement Plan route according to the Social Security Policy of JICA	Yen Bai Department of Transportation
18	Construction of new terminal at Tan Son Nhat International airport project	JICA	- Survey of existing natural/social environmental situation such as land-use, socio-economic condition along the proposed Project section - Prepare EIA report and EMP for the project	Project management unit under Southern Airport Authority
19	Hanoi Metro (Nhon- Hanoi Station Route)	AFD	- Conduct Inventory of losses (IOL) survey regarding land acquisition, replacement cost for impacts on land and structures on impacted land in Nhon - Hanoi Station route - Prepare the resettlement plan for the project	PMU of Hanoi urban railway

	Project	Donor	Consultant Tasks	Partner
20	Development projects in rural infrastructure and ecotourism in four upland districts in Lao Cai province	AFD	<ul style="list-style-type: none"> - Conduct replacement cost survey - Preparation of the resettlement plan for the 31 roads, 04 rural districts of Sa-Pa, Bat-Xat, Bac Ha and Si Ma Cai. 	PMU Rural Development and ecotourism four mountainous district of Lao Cai, Lao Cai Province.
21	Binh II Bridge Project (Hai Phong)	AFD	<ul style="list-style-type: none"> - Conduct replacement cost survey - Prepare resettlement action plan (RAP) for construction of Binh II Bridge (Hai Phong) 	AECOM (New Zealand)